



## Rally del Guavio - Etapa 1

**213**  
**Kilometers**

**160**  
**Waypoints**

**110**  
**Fuel Range**

Etapa 1 de la final del campeonato de Rally vultur 2023.  
213 km a través de la provincia del Guavio.  
Punto para poner combustible en el wp 61 km 110,07.

**START**  
Pista el Reto

**FINISH**  
Pista el Reto

## WARNING!!!

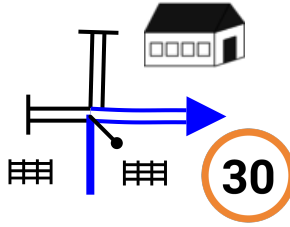
### **THIS ROUTE MAY BE DANGEROUS. FOLLOW THIS ROUTE AT YOUR OWN RISK.**

Conditions change over time. Route leads to remote areas many miles from help. This is not a "closed" course. The route crosses and travels on public roads and highways where other vehicles, pedestrians, and animals may be present. Some hazards are identified here, for illustration purposes only, but most hazards are not identified or marked. Information provided is approximate, and should not be considered precise. Obey all laws and use caution at all times. If signs, maps, or other indicators suggest the route travels into closed, illegal, private property, or otherwise restricted areas, this roadbook should not be followed into such areas.

**RALLY NAVIGATOR IS NOT RESPONSIBLE FOR THE ACCURACY OR SAFETY OF THIS ROUTE.**

**FOR PERSONAL USE ONLY**  
vulturrallyracing@gmail.com  
**NOT FOR COMMERCIAL USE**

0,00



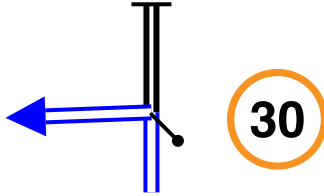
R  
Salida

1

151°

0,00 ↓ **DZ** 1

0,18



L

164°

0,18 ↓ 2

0,43



R

153°

0,25 ↓ 3

0,54

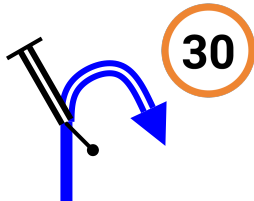


L FPP

129°

0,11 ↓ 4

1,03

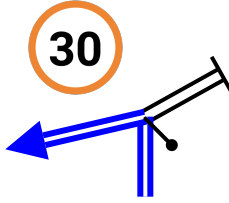


FRO on R

12°

0,49 ↓ 5

1,43



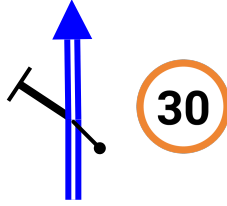
L

0,40 ↓

6

19°

1,59



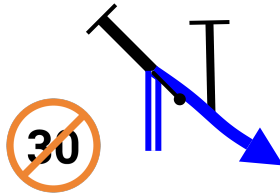
kpS

0,16

7

97°

1,92



R

0,33

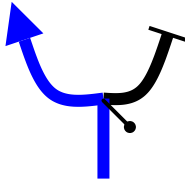
FZ

8

129°

2

2,30



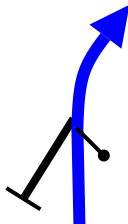
L FPP

0,38

9

106°

3,45



FPP

1,15

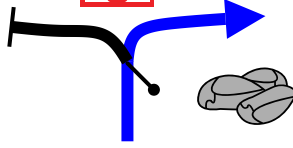
10

76°

5,06



Zanjas



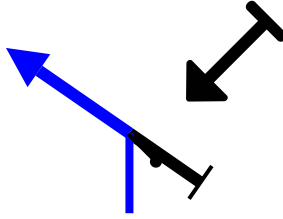
R FPP SA

1,61

11

151°

8,81



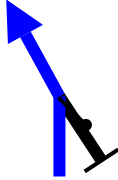
L FPP

3,75

12

108°

10,67



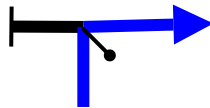
FPP

1,86

13

128°

12,10



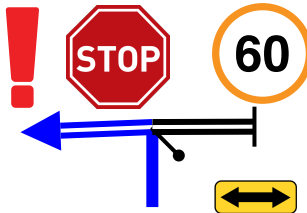
R FPP

1,43

14

211°

16,07



L FRO

3,97

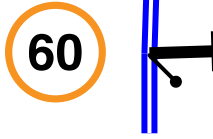


15

70°



19,98



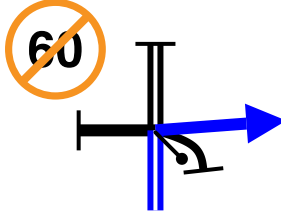
FRO

3,91

16

72°

21,32



R FPP

1,34

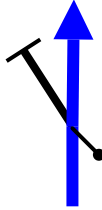


17

167°



22,74



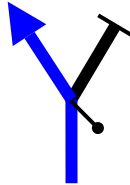
FPP

1,42

18

117°

23,27



L

0,53



19

143°

23,46



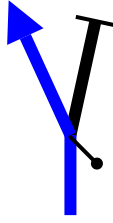
L FPP

0,19

20

105°

24,34



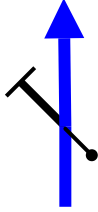
L

0,88

21

74°

25,40



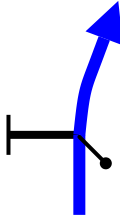
FPP

1,06

22

92°

26,03



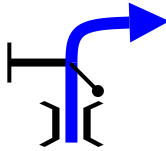
FPP

0,63 ↓

23

117°

26,17



FPP

0,14

24

190°

26,76



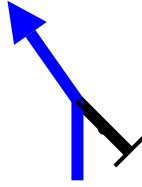
FPP

0,59

25

117°

29,42



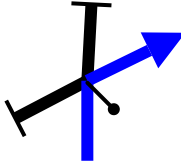
FPP

2,66

26

83°

33,27



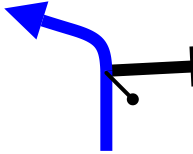
R FPP

3,85

27

122°

34,44



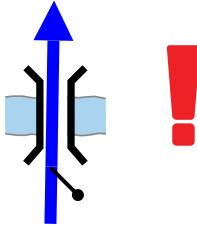
FPP

1,17

28

101°

45,21



FPP

Puente sin  
baranda

10,77

29

146°

46,98



L

1,77



30

83°

47,12



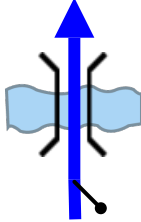
R

0,14

31

98°

47,99



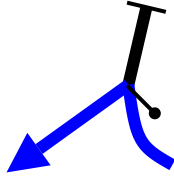
FPP

0,87

32

83°

51,82



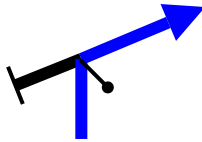
L FPP

3,83

33

170°

55,15



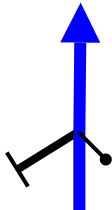
R FPP

3,33

34

221°

60,40



FPP

5,25

35

155°



61,11



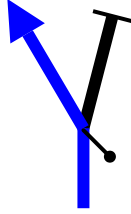
L

0,71

36

146°

61,58



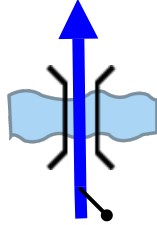
L FPP

0,47

37

78°

63,70



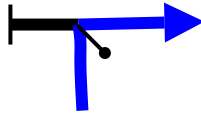
FPP

2,12

38

112°

64,46



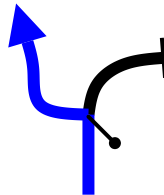
R FPP

0,76

39

177°

65,23



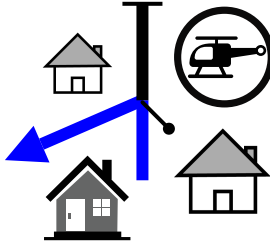
L FPP

0,77

40

115°

66,11



L

0,88

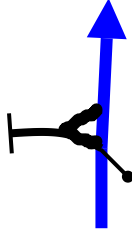


41

33°

5

66,54



FPP

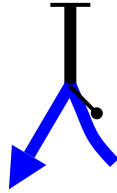
0,43



42

59°

66,73



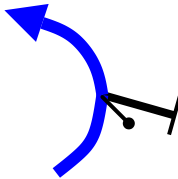
L

0,19

43

349°

67,26



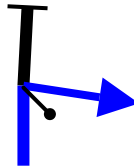
FPP on L

0,53

44

1°

69,41



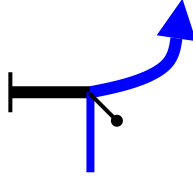
R

2,15

45

144°

70,44



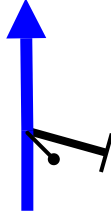
R FPP

1,03

46

180°

72,05



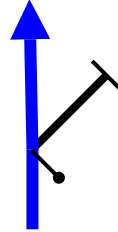
FPP

1,61

47

84°

73,74



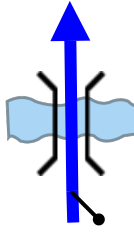
FPP

1,69

48

325°

80,63



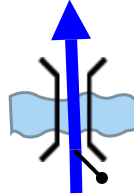
FPP

6,89

49

56°

90,93



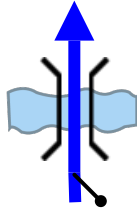
FPP

10,30

50

3°

94,70



FPP

3,77

51

70°

95,45



FR0



0,75

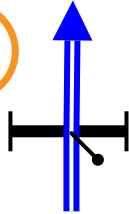


52

7°

6

98,57



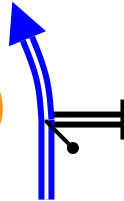
FR0

3,12

53

65°

100,58



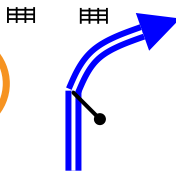
FR0

2,01

54

77°

101,51



FR0

0,93

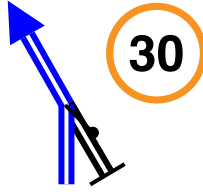


55

111°

7

101,68



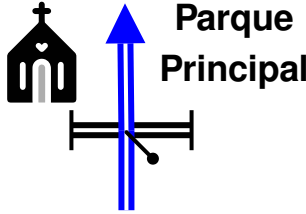
FR0

0,17 ↓

56

50°

101,84



FR0

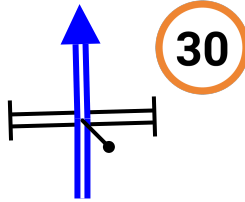
Neutralización

0,16 ↓

57

64°

101,97



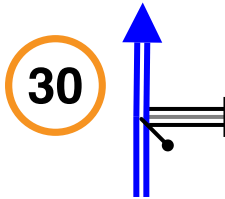
FR0

0,13 ↓

58

43°

102,14



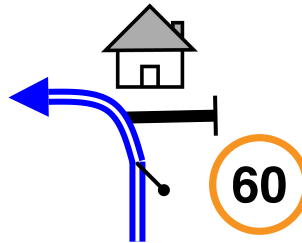
FR0

0,17 ↓

59

58°

102,42



FR0

0,28

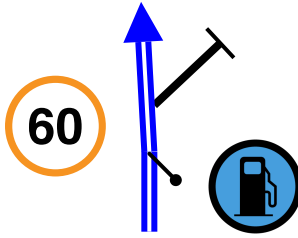
DZ

60

27°

8

103,07



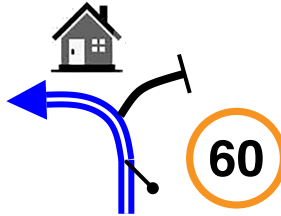
FRO

0,65

61

2°

106,53



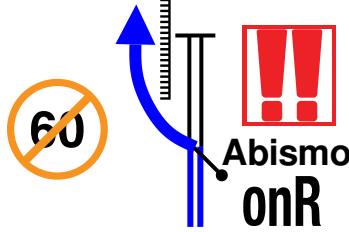
FRO

3,46

62

358°

107,99



L FPP

1,46

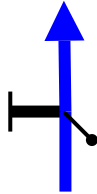


63

347°

9

109,86



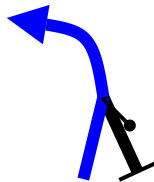
kpS ↘ FPP

1,87

64

322°

111,32



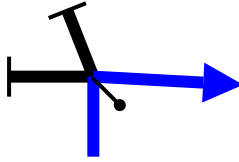
FPP

1,46

65

346°

113,21



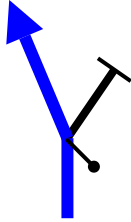
R

1,89

66

325°

113,52



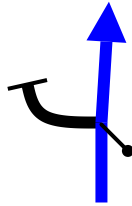
FPP on L

0,31

67

304°

114,99



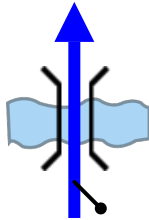
kpS

1,47 ↓

68

263°

115,15



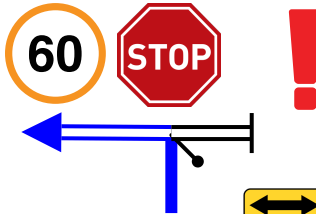
kpS

0,16 ↓

69

324°

115,18



L FRO

0,03



70



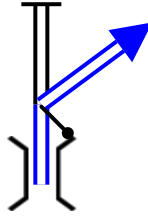
244°



116,86

1,68 ↓

71



R

Puente amarillo

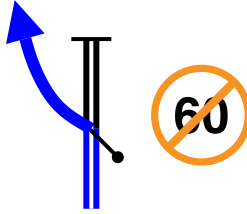
321°

116,92

0,06



72



L FPP

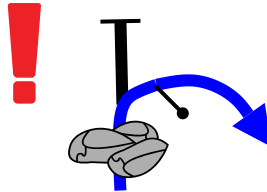
240°

11

117,69

0,77

73



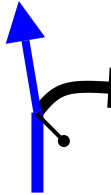
R FPP

331°

119,31

1,62

74



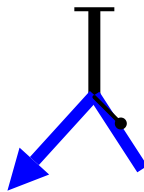
kpSFPP

261°

120,02

0,71

75



L FPP

176°



121,01



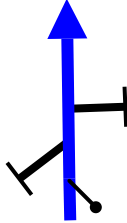
L FPP

0,99

76

228°

121,79



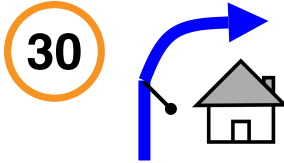
FPP

0,78

77

258°

122,17



FPP

0,38

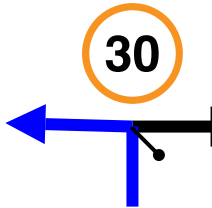
DZ

78

318°

12

122,39



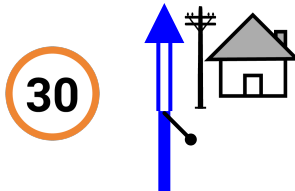
L

0,22

79

211°

122,55



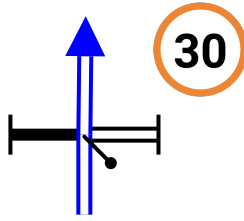
kpS

0,16

80

205°

122,61



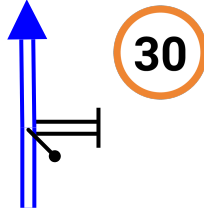
kpS

0,06 ↓

81

207°

122,68



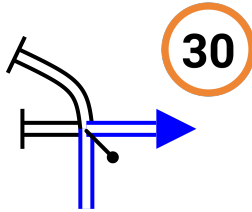
kpS

0,07 ↓

82

196°

122,73



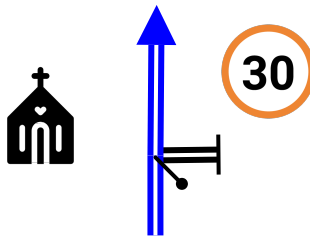
R

0,05 ↓

83

281°

122,77



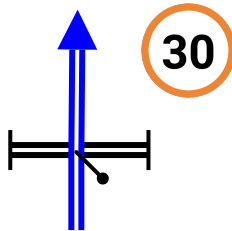
kpS

0,04 ↓

84

289°

122,82



kpS

0,05 ↓

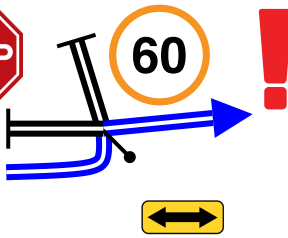
85

322°

PROXIMA NOTA  
PROCH NOTE  
NEXT NOTE

0,14

122,96



R FRO

0,14

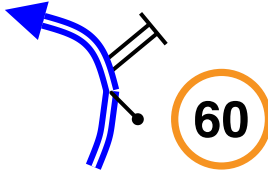


86

305°

13

133,93



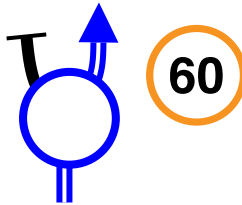
FRO onL

10,97

87

307°

139,82



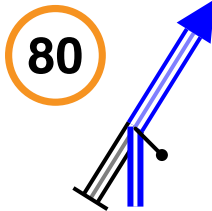
R

5,89

88

310°

140,21



FRO

0,39

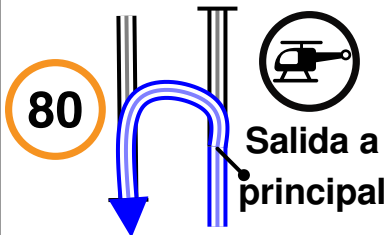


89

245°

14

143,77



L  
Retorno

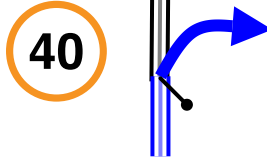
3,56

90

215°

146,19

2,42 **DZ** 91



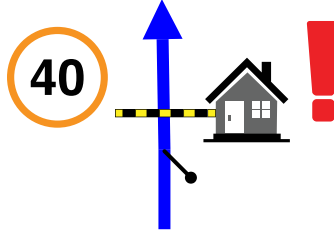
75°

R ↗

15

146,33

0,14 92

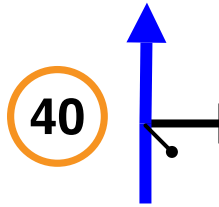


143°

Cadena

147,60

1,27 93

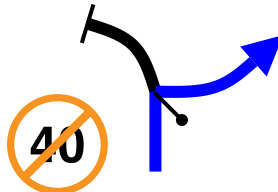


188°

FPP

152,64

5,04 **FZ** 94



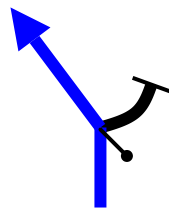
277°

R FPP

16

153,31

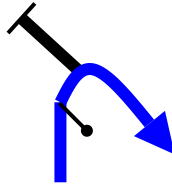
0,67 95



228°

L FPP

155,78



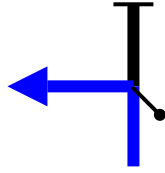
R

2,47

96

302°

156,22



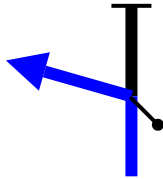
L FPP

0,44

97

265°

158,12



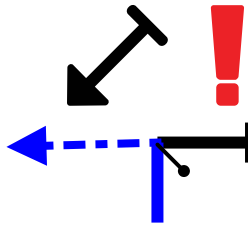
L

1,90

98

139°

159,19



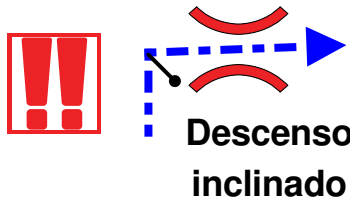
L  
Huellas

1,07

99

119°

159,42



Huellas

0,23

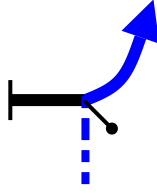


100

192°

17

**160,29**



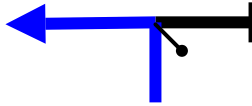
**R FPP**

0,87

**101**

**218°**

**161,89**



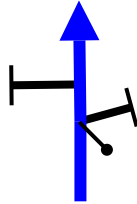
**L**

1,60

**102**

**111°**

**162,50**



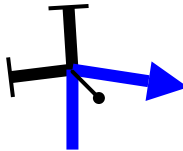
**FPP**

0,61

**103**

**95°**

**164,80**



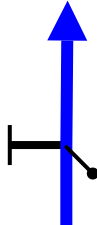
**R FPP**

2,30

**104**

**194°**

**166,45**



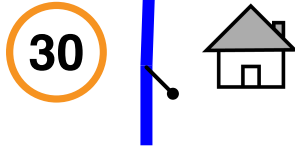
**FPP**

1,65

**105**

**197°**

167,03



FPP

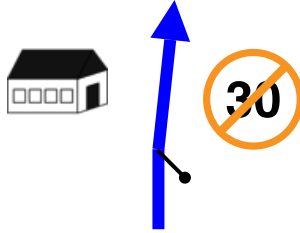
0,58



191°

18

167,44



FPP

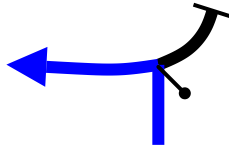
0,41



245°

19

167,90



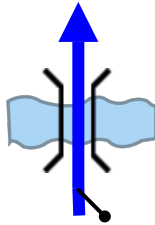
L

0,46

108

122°

168,23



FPP

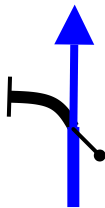
0,33



109

202°

168,30



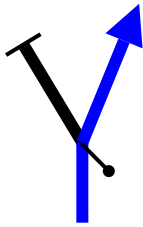
kpS

0,07

110

190°

169,03



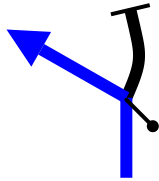
R

0,73

111

203°

169,35



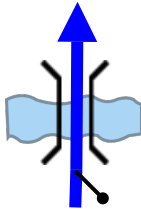
L

0,32

112

224°

170,46



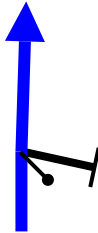
FPP

1,11

113

200°

171,08



FPP

0,62



114

229°

171,32



FPP

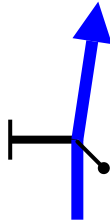
0,24

115

213°



171,90



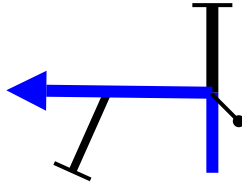
FPP

0,58

116

217°

173,53



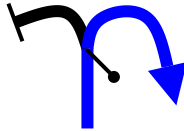
L/RFPP

1,63

117

143°

174,34



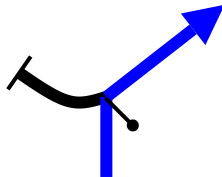
FPP on R

0,81

118

259°

174,84



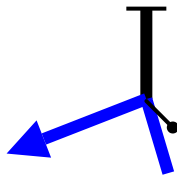
R

0,50

119

268°

175,83



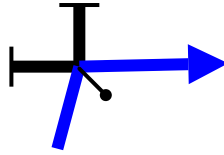
L

0,99

120

166°

176,77



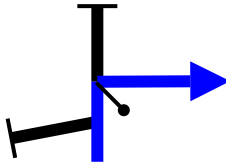
R

0,94

121

293°

177,71



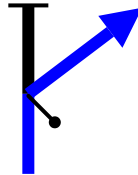
R

0,94

122

297°

177,83



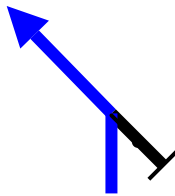
R FPP

0,12

123

354°

180,32



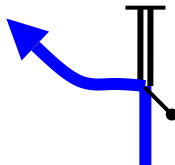
FPP

2,49

124

263°

180,44



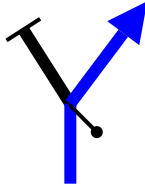
L FPP

0,12

125

155°

181,52



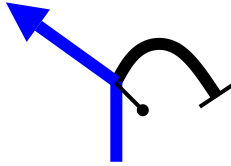
R FPP

1,08

126

254°

181,82



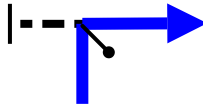
L FPP

0,30

127

183°

184,00



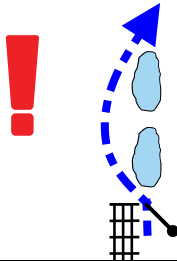
R

2,18

128

293°

184,33



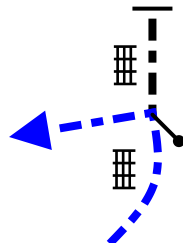
Evitar charcos  
por el potrero

0,33 ↓

129

258°

184,36



Cruzar  
Broche

L  
Seguir  
Huellas

0,03 ↓

130

201°

**184,53**

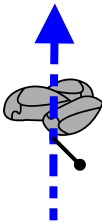
0,17 ↓



131



Zanjas



Seguir huellas

193°

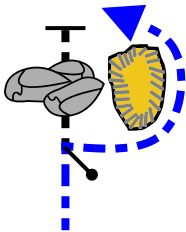
(20)

**184,55**

0,02 ↓



132



R  
Bordear y seguir huellas

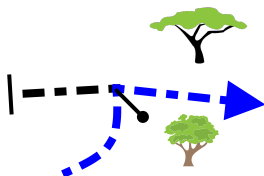
262°

(21)

**184,61**

0,06 ↓

133



Seguir huellas  
Entre árboles

236°

**184,70**

0,09 ↓

134



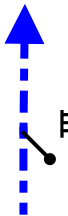
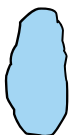
Escalón

267°

**184,92**

0,22 ↓

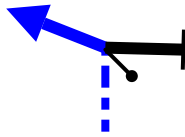
135



Broche

214°

184,95



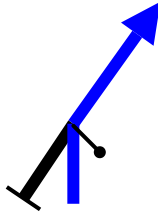
L FPP

0,03

136

146°

186,08



FPP

1,13

137

273°

187,14



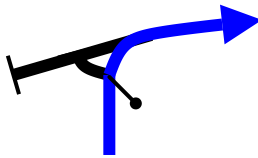
FPP

1,06

138

272°

188,02



R

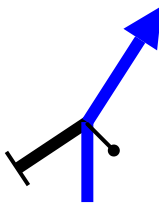
0,88



139

301°

188,21



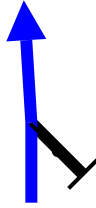
FPP

0,19

140

349°

188,74



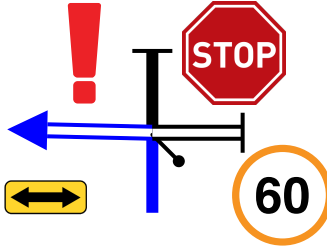
FPP

0,53

141

291°

190,16



L FRO

1,42

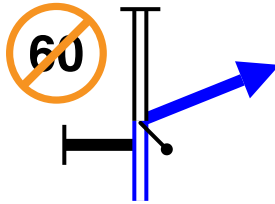


142

278°

(22)

196,09



R FPP

5,93

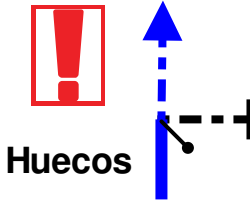


143

276°

(23)

196,78



kpS

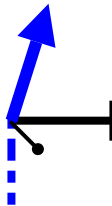
Huellas

0,69

144

286°

197,17



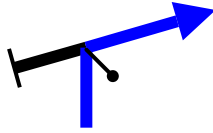
FPP

0,39

145

273°

197,71



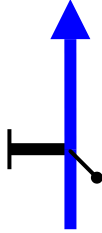
R FPP

0,54

146

16°

198,38



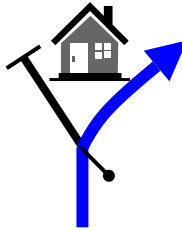
FPP

0,67

147

52°

199,86



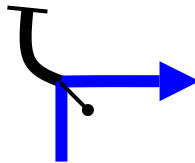
FPP on R

1,48

148

24°

202,57



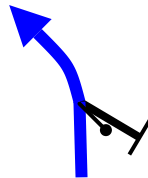
R

2,71

149

75°

203,45



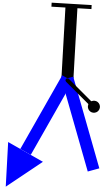
FPP

0,88

150

80°

205,26



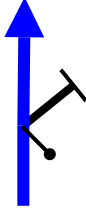
L FPP

1,81

151

308°

207,14



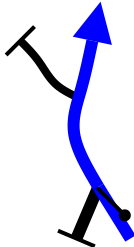
FPP

1,88

152

281°

208,74



FPP on R

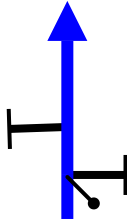
1,60



153

334°

209,00



FPP

0,26

154

22°

209,86



R

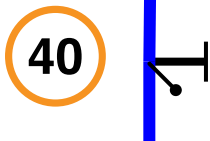
0,86

155

74°



211,38



FPP

1,52

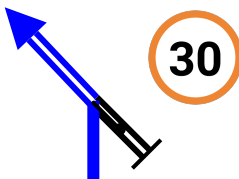


156

20°

24

212,59



L

Zona urbana

1,21

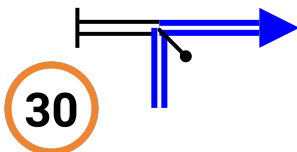


157

311°

25

212,70



R

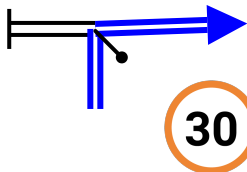
0,11



158

38°

212,95



R

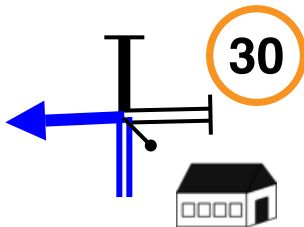
0,25



159

69°

213,13



L

Pista El Reto

0,18



160

327°

26

**213  
Km**

**160  
Waypoints**

**110 Km  
Fuel Range**

**START**  
Pista el Reto

**FINISH**  
Pista el Reto

**POWERED BY**



**Rally del Guavio - Etapa 1**

**WWW.RALLYNAVIGATOR.COM**