

[WWW.RALLYNAVIGATOR.COM](http://WWW.RALLYNAVIGATOR.COM)



## Rally del Río Negro - Etapa 1 - Navegación

133

**Kilometers**

77

**Waypoints**

52

**Fuel Range**

Tercera Válida del campeonato de Rally Vultur 2023.  
130 km a través de la provincia de Rionegro - Cundinamarca.

### **START**

Quinta Sol y Luna, Pacho - Cundinamarca

### **FINISH**

Quinta Sol y Luna, Pacho - Cundinamarca

## **WARNING!!!**

### **THIS ROUTE MAY BE DANGEROUS. FOLLOW THIS ROUTE AT YOUR OWN RISK.**

Conditions change over time. Route leads to remote areas many miles from help. This is not a "closed" course. The route crosses and travels on public roads and highways where other vehicles, pedestrians, and animals may be present. Some hazards are identified here, for illustration purposes only, but most hazards are not identified or marked. Information provided is approximate, and should not be considered precise. Obey all laws and use caution at all times. If signs, maps, or other indicators suggest the route travels into closed, illegal, private property, or otherwise restricted areas, this roadbook should not be followed into such areas.

**RALLY NAVIGATOR IS NOT RESPONSIBLE FOR THE ACCURACY OR SAFETY OF THIS ROUTE.**

**FOR PERSONAL USE ONLY**

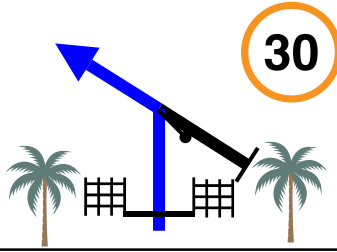
vulturrallyracing@gmail.com

**NOT FOR COMMERCIAL USE**

0,00



0,00



Salida  
FPP

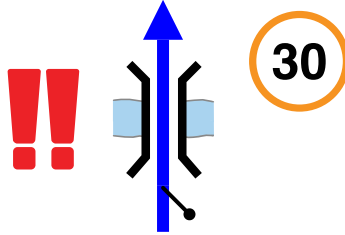
316°



0,64

0,64

2

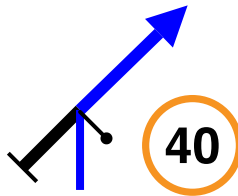


FPP  
Puente en madera  
sin baranda

260°

0,95

0,31



FPP

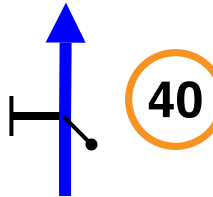
337°



2,15

1,20

4



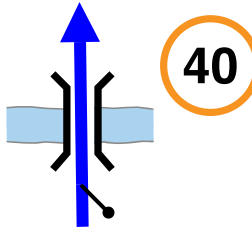
FPP

314°

3,39

1,24

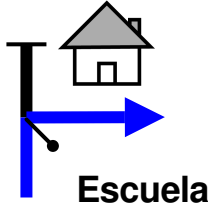
5



FPP

327°

3,94



R FPP

3

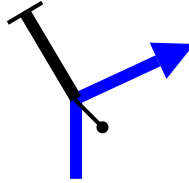
0,55



6

64°

4,95



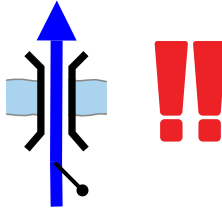
R FPP

1,01

7

148°

6,88



FPP

Puente de madera  
sin baranda

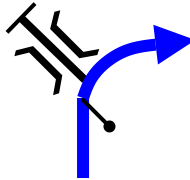
1,93



8

71°

7,14



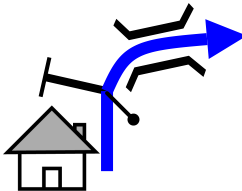
FPP onR

0,26

9

47°

8,18



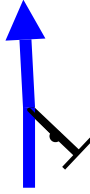
FPP onR

1,04

10

123°

9,17



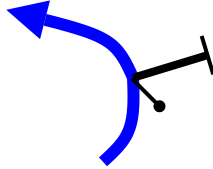
FPP

0,99

11

91°

9,54



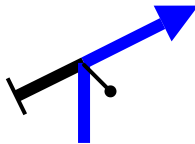
FPP

0,37

12

65°

11,32



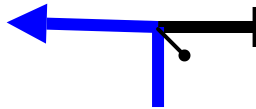
R

1,78

13

177°

11,63



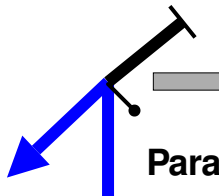
L

0,31

14

83°

12,28



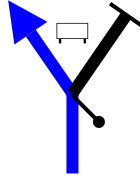
L FPP

0,65

15

294°

15,94



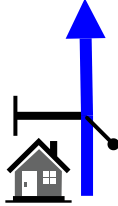
L FPP

3,66

16

254°

19,04



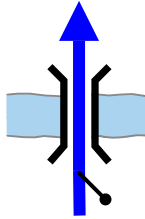
FPP

3,10

17

115°

20,37



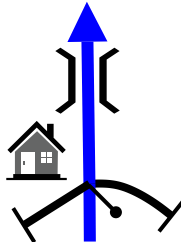
FPP

1,33

18

319°

20,88



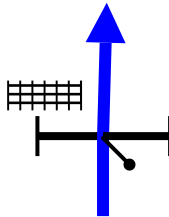
FPP

0,51

19

16°

21,54



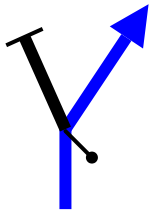
FPP

0,66

20

330°

30,83



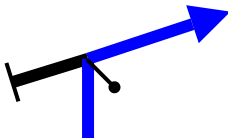
R

9,29

21

282°

32,14



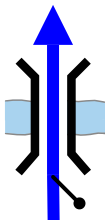
R FPP

1,31

22

20°

39,60



FPP

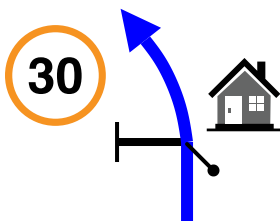
Puente Amarillo

7,46

23

248°

41,62



kpS

Zona Urbana

2,02

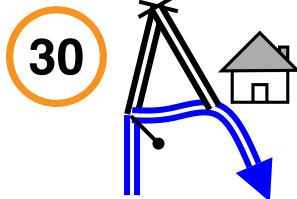


24

1°



42,16



R R

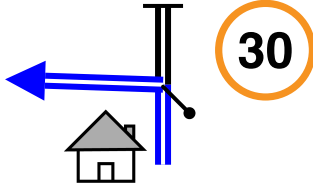
0,54



25

53°

42,20



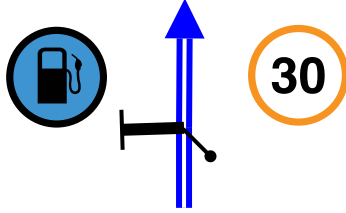
L

0,04 ↓

26

10°

42,27



kpS FRO

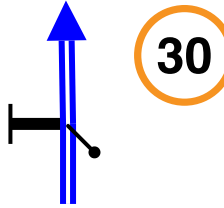
Gas onL

0,07 ↓

27

8°

42,34



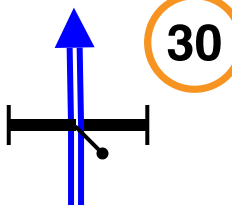
kpS

0,07 ↓

28

7°

42,39



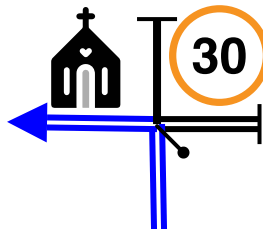
kpS

0,05 ↓

29

8°

42,46



L

0,07 ↓

30

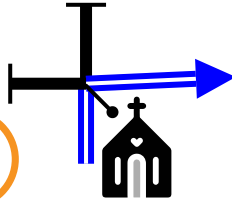
279°



42,53

0,07 ↓

31



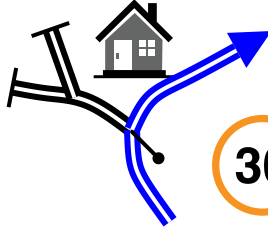
R

6°

42,62

0,09 ↓

32



FRO on R

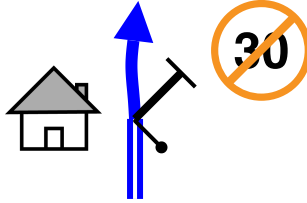
16°

42,77

0,15



33



FPP

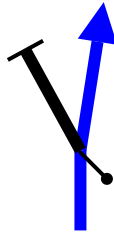
24°



43,90

1,13

34



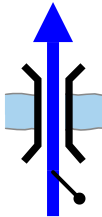
kpSFPP

0°

48,12

4,22 ↓

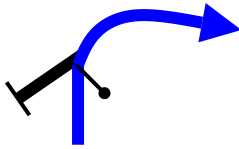
35



FPP

325°

48,25



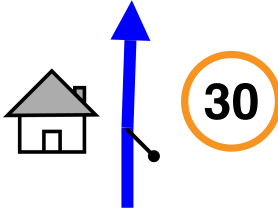
FPP

0,13

36

34°

53,03



FPP

4,78

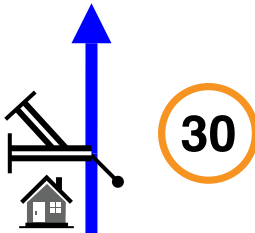


37

28°

6

53,38



kpSFPP

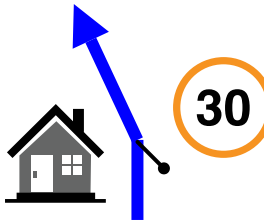
0,35



38

55°

53,56



FPP

0,18



39

41°

7

55,05



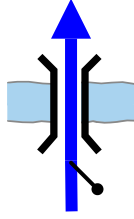
FPP

1,49

40

20°

61,36



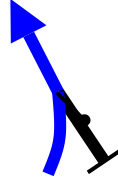
kpS

6,31 ↓

41

133°

61,41



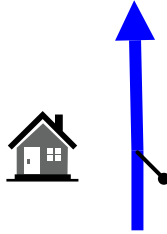
kpS

0,05

42

87°

62,90



Zona Urbana

1,49 ↓

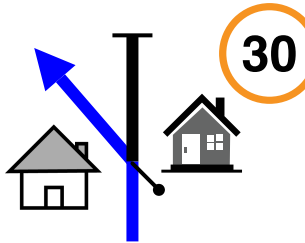


43

46°



63,10



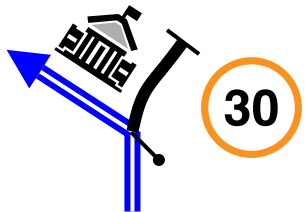
L

0,20 ↓

44

65°

63,31



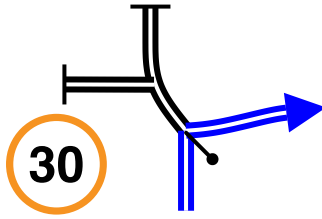
L

0,21 ↓

45

49°

63,38



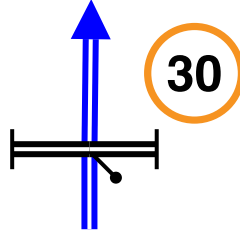
R

0,07 ↓

46

157°

63,45



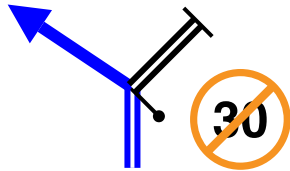
kpS

0,07 ↓

47

157°

63,55



L FPP

0,10

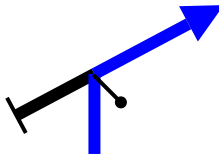
FZ

48

81°

9

64,52



R FPP

0,97

49

92°

68,84



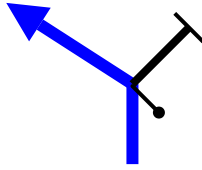
FPP on R

4,32

50

74°

74,25



FPP onL

5,41

51

142°

76,10



FPP

1,85



52

134°

10

76,44



FPP

0,34

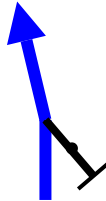


53

150°

11

83,61



7,17

54

138°

84,71

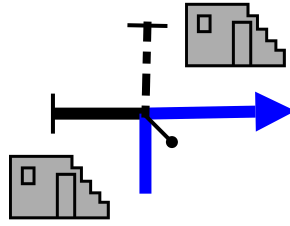


1,10

55

111°

87,73



R

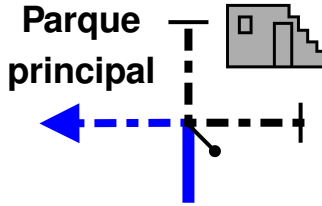
Pueblo Fantasma

3,02 ↓

56

223°

87,82



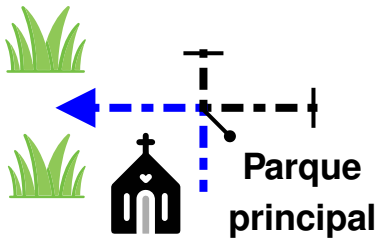
L

0,09 ↓

57

137°

87,88



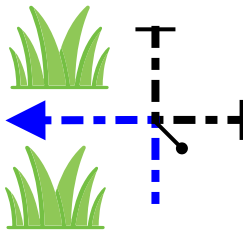
L

0,06 ↓

58

44°

87,97



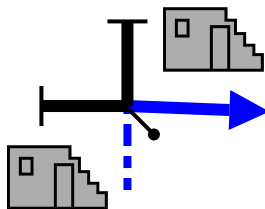
L

0,09 ↓

59

314°

88,04



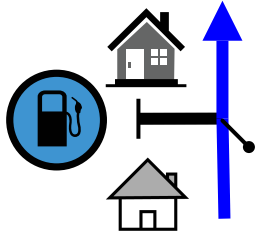
R FPP

0,07

60

47°

94,46



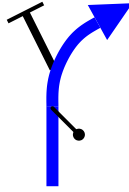
FPP

6,42

61

111°

97,78



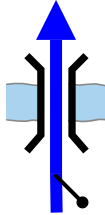
FPP onR

3,32

62

211°

98,11



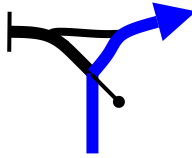
FPP

0,33

63

146°

98,82



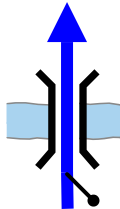
FPP onR

0,71

64

201°

101,94



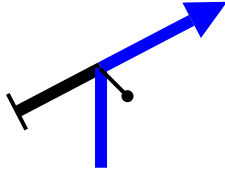
FPP

3,12

65

266°

107,62



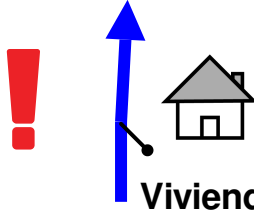
R FPP

5,68

66

0°

110,51



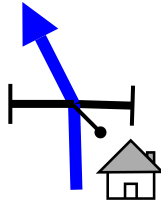
FPP

2,89

67

238°

111,71



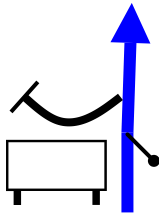
FPP

1,20

68

187°

117,74



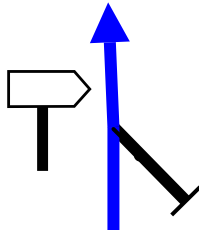
FPP

6,03

69

160°

122,57



L

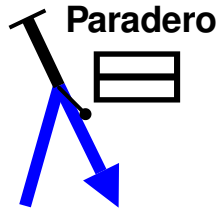
4,83

70

76°



126,23



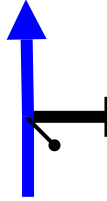
R

3,66

71

264°

126,87



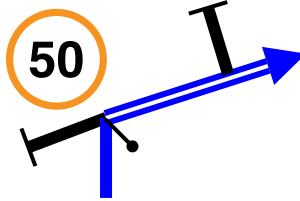
kpS

0,64

72

260°

129,40



R RO

2,53

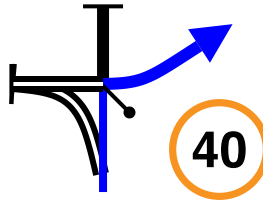


73

234°

12

130,80



R FRO

1,40

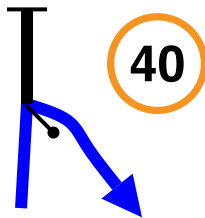


74

260°

13

131,86



R ↘

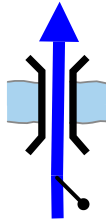
1,06



75

112°

**132,14**



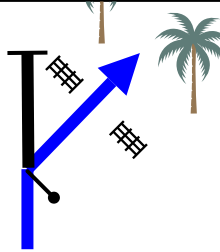
**FPP**  
Puente en madera  
sin baranda

0,28

76

82°

**132,81**



Meta

0,67



77



122°



133  
Km

77  
Waypoints

52 Km  
Fuel Range

**START**

Quinta Sol y Luna, Pacho - Cundinamarca

**FINISH**

Quinta Sol y Luna, Pacho - Cundinamarca

**POWERED BY**



Rally del Río Negro - Etapa 1 - Navegación

**WWW.RALLYNAVIGATOR.COM**