



Rally del Río Negro - Etapa 1 - Navegación

133
Kilometers

77
Waypoints

52
Fuel Range

Tercera Válida del campeonato de Rally Vultur 2023.
130 km a través de la provincia de Rionegro - Cundinamarca.

START

Quinta Sol y Luna, Pacho - Cundinamarca

FINISH

Quinta Sol y Luna, Pacho - Cundinamarca

WARNING!!!

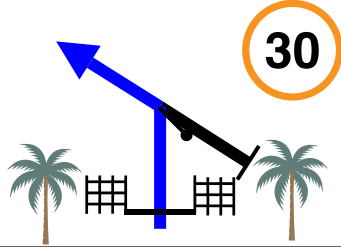
THIS ROUTE MAY BE DANGEROUS. FOLLOW THIS ROUTE AT YOUR OWN RISK.

Conditions change over time. Route leads to remote areas many miles from help. This is not a "closed" course. The route crosses and travels on public roads and highways where other vehicles, pedestrians, and animals may be present. Some hazards are identified here, for illustration purposes only, but most hazards are not identified or marked. Information provided is approximate, and should not be considered precise. Obey all laws and use caution at all times. If signs, maps, or other indicators suggest the route travels into closed, illegal, private property, or otherwise restricted areas, this roadbook should not be followed into such areas.

RALLY NAVIGATOR IS NOT RESPONSIBLE FOR THE ACCURACY OR SAFETY OF THIS ROUTE.

FOR PERSONAL USE ONLY
vulturrallyracing@gmail.com
NOT FOR COMMERCIAL USE

0,00



Salida

FPP

0,00

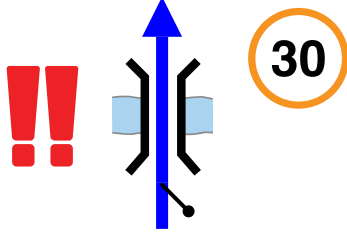


1

316°



0,64



FPP

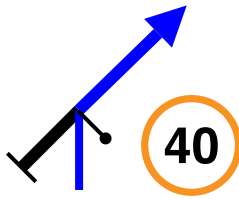
Puente en madera sin baranda

0,64

2

260°

0,95



FPP

0,31

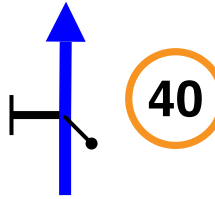


3

337°



2,15



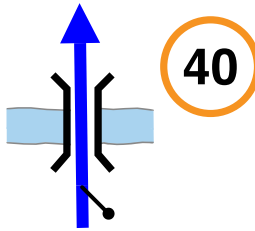
FPP

1,20

4

314°

3,39



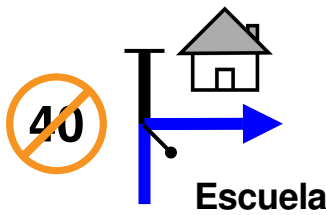
FPP

1,24

5

327°

3,94



R FPP

0,55

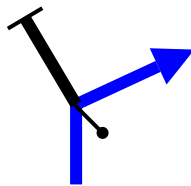


6

64°



4,95



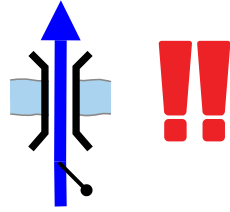
R FPP

1,01

7

148°

6,88



FPP

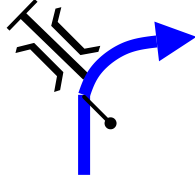
Puente de madera sin baranda

1,93 ↓

8

71°

7,14



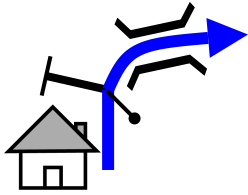
FPP onR

0,26

9

47°

8,18



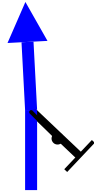
FPP onR

1,04

10

123°

9,17



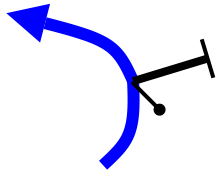
FPP

0,99

11

91°

9,54



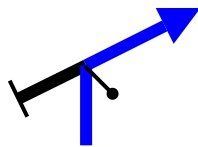
FPP

0,37

12

65°

11,32



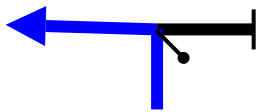
R

1,78

13

177°

11,63



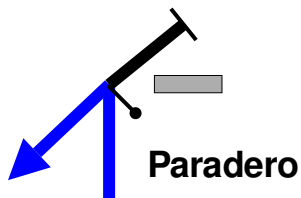
L

0,31

14

83°

12,28



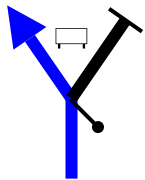
L FPP

0,65

15

294°

15,94



L FPP

3,66

16

254°

19,04



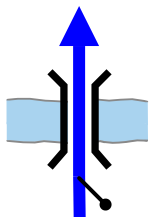
FPP

3,10

17

115°

20,37



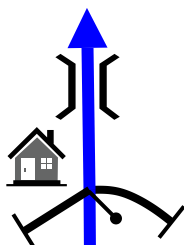
FPP

1,33

18

319°

20,88



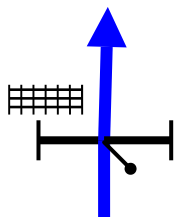
FPP

0,51

19

16°

21,54



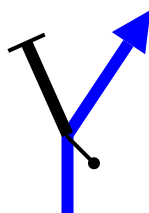
FPP

0,66

20

330°

30,83



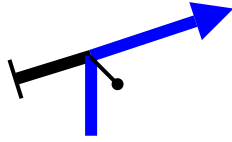
R

9,29

21

282°

32,14



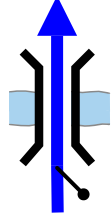
R FPP

1,31

22

20°

39,60



FPP

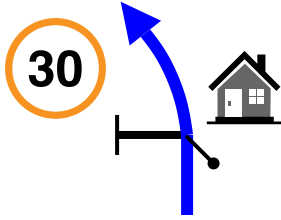
Puente Amarillo

7,46

23

248°

41,62



kpS

Zona Urbana

2,02

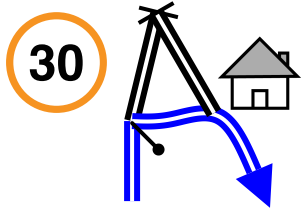


24

1°



42,16



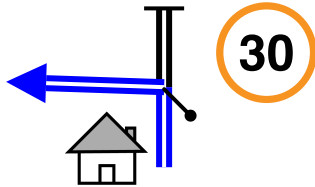
R R

0,54

25

53°

42,20



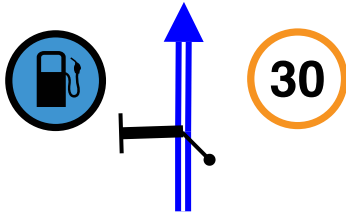
L

0,04

26

10°

42,27



kpS FRO

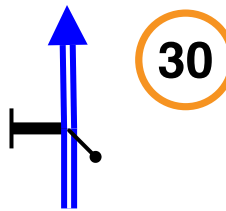
Gas onL

0,07

27

8°

42,34



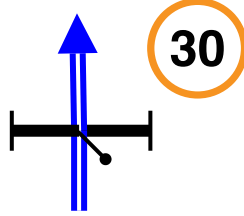
kpS

0,07

28

7°

42,39

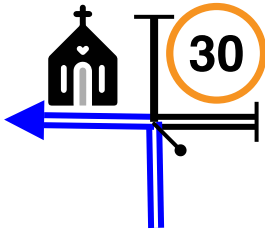


kpS

0,05 ↓ 29

8°

42,46

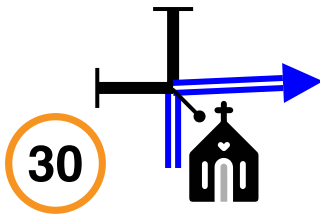


L

0,07 ↓ 30

279°

42,53

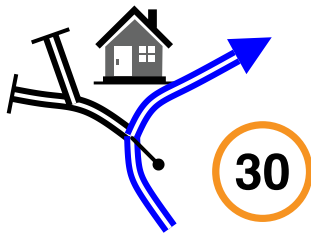


R

0,07 ↓ 31

6°

42,62

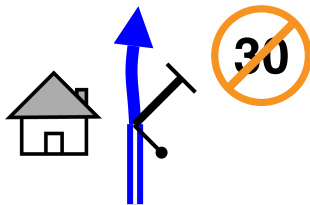


FROonR

0,09 ↓ 32

16°

42,77



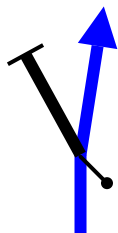
FPP

0,15 FZ 33

24°

5

43,90

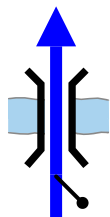


kpSFPP

1,13 34

0°

48,12

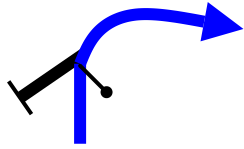


FPP

4,22 ↓ 35

325°

48,25



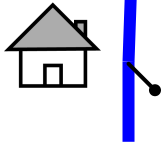
FPP

0,13

36

34°

53,03



30

FPP

4,78

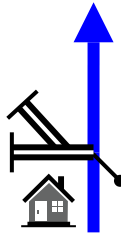


37

28°

6

53,38



30

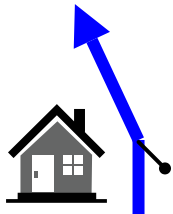
kpSFPP

0,35

38

55°

53,56



30

FPP

0,18



39

41°

7

55,05



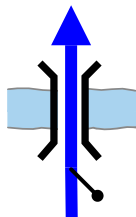
FPP

1,49

40

20°

61,36



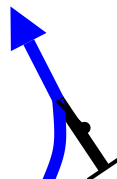
kpS

6,31

41

133°

61,41



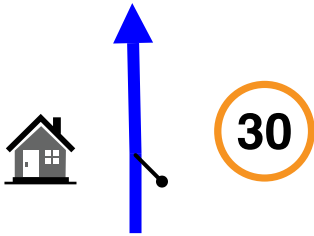
kpS

0,05

42

87°

62,90



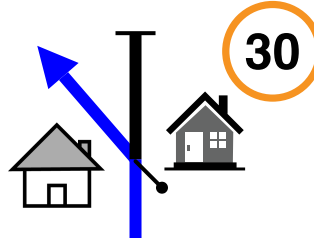
Zona Urbana

1,49 ↓ **DZ** 43

46°

8

63,10

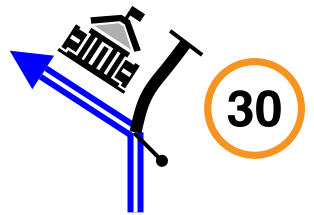


L

0,20 ↓ 44

65°

63,31

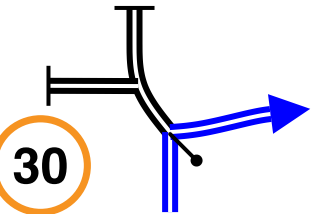


L

0,21 ↓ 45

49°

63,38

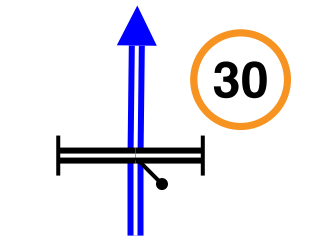


R

0,07 ↓ 46

157°

63,45

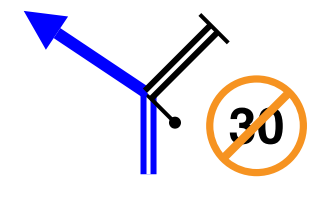


kpS

0,07 ↓ 47

157°

63,55



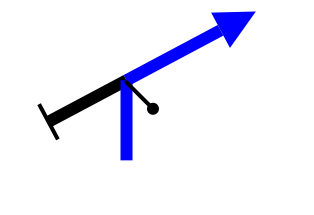
L FPP

0,10 **FZ** 48

81°

9

64,52

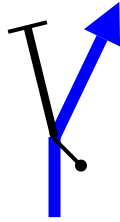


R FPP

0,97 49

92°

68,84



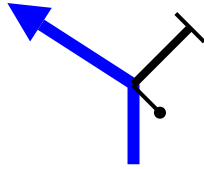
FPP on R

4,32

50

74°

74,25



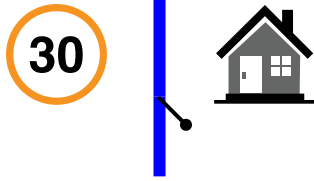
FPP on L

5,41

51

142°

76,10



FPP

1,85

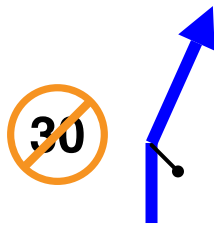


52

134°

(10)

76,44



FPP

0,34

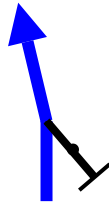


53

150°

(11)

83,61

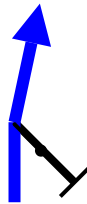


7,17

54

138°

84,71

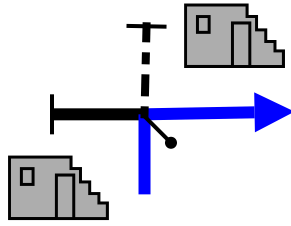


1,10

55

111°

87,73



R

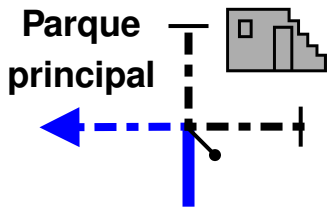
Pueblo Fantasma

3,02

56

223°

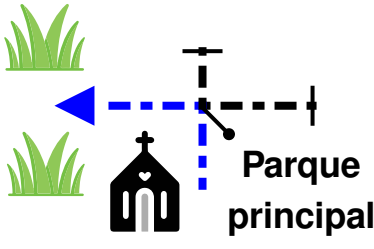
87,82
0,09 ↓ **57**



L

137°

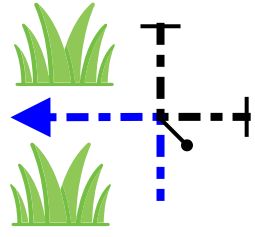
87,88
0,06 ↓ **58**



L

44°

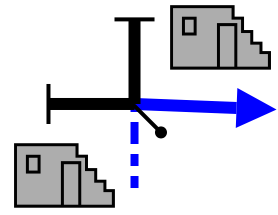
87,97
0,09 ↓ **59**



L

314°

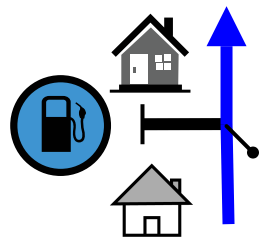
88,04
0,07 **60**



R FPP

47°

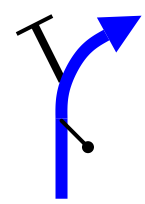
94,46
6,42 **61**



FPP

111°

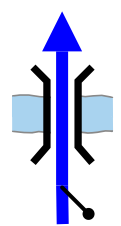
97,78
3,32 **62**



FPP on R

211°

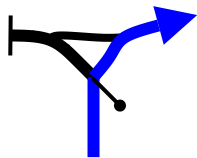
98,11
0,33 **63**



FPP

146°

98,82



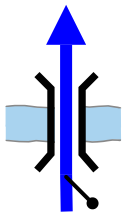
FPP onR

0,71

64

201°

101,94



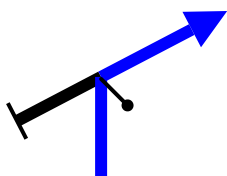
FPP

3,12

65

266°

107,62



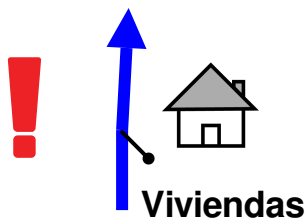
R FPP

5,68

66

0°

110,51



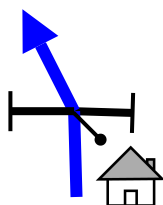
FPP

2,89

67

238°

111,71



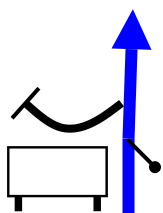
FPP

1,20

68

187°

117,74



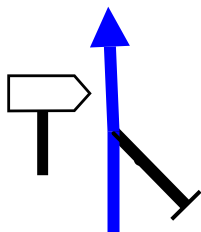
FPP

6,03

69

160°

122,57



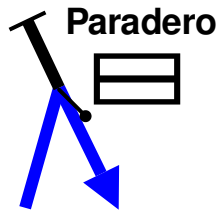
L

4,83

70

76°

126,23



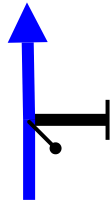
R

3,66

71

264°

126,87



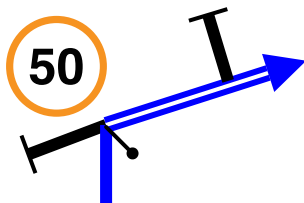
kpS

0,64

72

260°

129,40



R RO

2,53

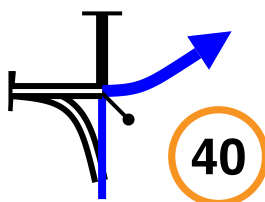


73

234°

(12)

130,80



R FRO

1,40

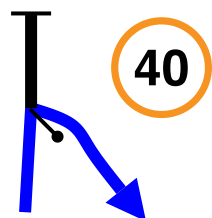


74

260°

(13)

131,86



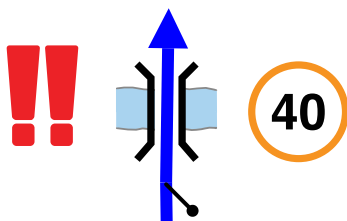
R ↘

1,06 ↓

75

112°

132,14



FPP

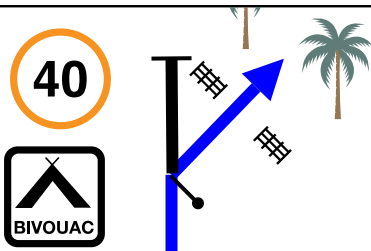
Puente en madera sin baranda

0,28

76

82°

132,81



Meta

0,67



77

122°

(14)

133
Km

77
Waypoints

52 Km
Fuel Range

START

Quinta Sol y Luna, Pacho - Cundinamarca

FINISH

Quinta Sol y Luna, Pacho - Cundinamarca

POWERED BY



Rally del Río Negro - Etapa 1 - Navegación

WWW.RALLYNAVIGATOR.COM